



PrecisionMedical



External Lithium Ion Battery

Precision Medical

300 Held Drive • Northampton, PA 18067 USA

T: 800-272-7285 • F: 800-352-1240

www.precisionmedical.com

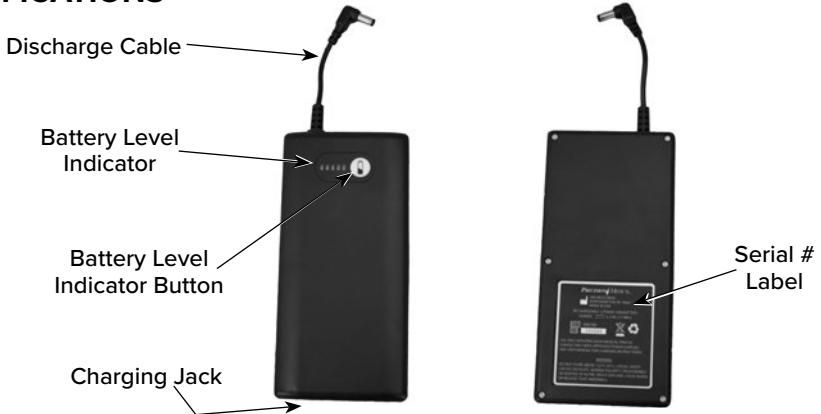
ISO 13485 Certified



RECEIVING / INSPECTION

Remove the Precision Medical, Inc. *External Lithium ION Battery* from the packaging and inspect for damage. If there is any damage, **DO NOT USE** and contact your Provider.

SPECIFICATIONS



Dimensions:

<i>Height:</i>	6.75 in	(17.15 cm)
<i>Width:</i>	2.83 in	(7.15 cm)
<i>Depth:</i>	1.3 in	(3.30 cm)

Weight: 1.23 lbs (0.06 kg)

Storage Temperature: -4°F to 122°F (-20°C to 50°C)

Operating Temperature: 41°F to 104°F (5°C to 40°C)

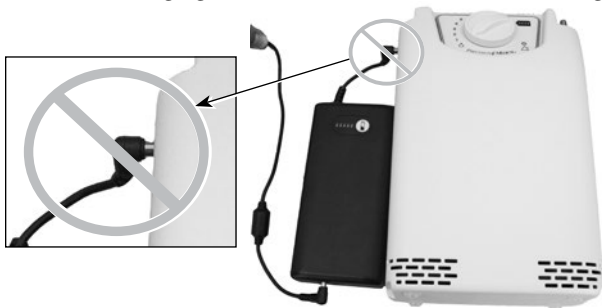
Nominal Voltage: 14.8 VDC

Capacity: 77 Whr (Watt Hour)

Specifications are subject to change without prior notice.

CHARGING

1. Use **ONLY** Precision Medical AC Power Supply (Part #506629) or Precision Medical DC Power Supply (Part #506750) for charging.
2. The external battery is not intended to be charged while connected to the EasyPulse POC. Before charging, make sure to disconnect the discharge cable from the EasyPulse POC.



Lithium Ion Battery Guidelines

Proper Use:

In order to prolong life of the battery, it is best to charge the battery frequently rather than waiting until the battery is fully discharged.

Storage:

When storing for long periods of time without use (> 1 month) be sure to charge the battery to around 50% charge level to prolong life of battery.

3. Connect the DC Plug from either power supply to the external battery's charging jack as shown on the next page. If using the AC Power Supply, plug the AC wall plug into a wall socket. If using the DC Power Supply, plug the Auto Accessory Plug into your vehicle's 12 VDC accessory jack.



- One of the green LED's on the battery level indicator will flash during charging. When all LED's appear solid (*no flashing*) the battery is fully charged. **NOTE:** When charging a depleted battery it may take a few minutes for green LED to begin flashing.

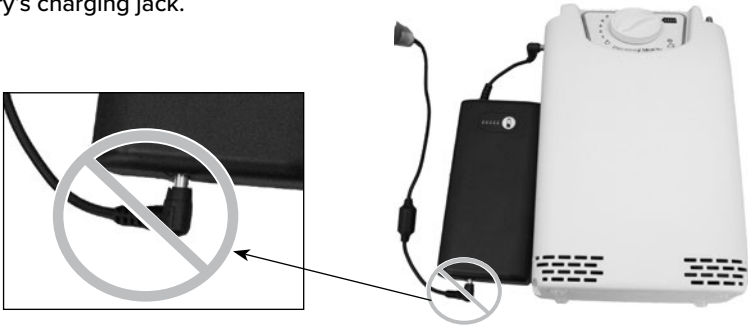
USING THE EXTERNAL BATTERY

⚠WARNING

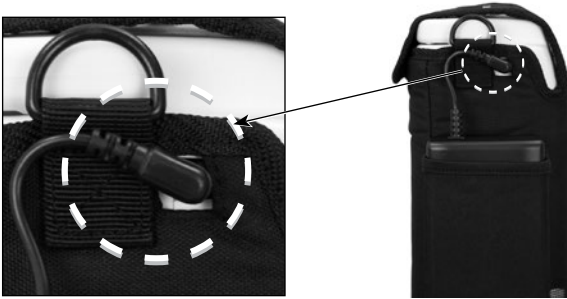
- Disconnect External Battery from POC when not in use.
- DO NOT** drop External Battery, this could damage the internal components of the battery and **will void the warranty**.

NOTE: To reduce the risk of electrical shock, DO NOT remove cover of external battery, no user serviceable parts inside. Refer servicing to qualified service personnel.

- Before using battery, be sure to disconnect any power supply from the external battery's charging jack.



- Plug the external battery discharge cable into the power jack on the EasyPulse POC.



- Turn on the EasyPulse POC to desired setting.
- The EasyPulse POC will draw power from the external battery until the external battery is depleted. The POC will switch over to the internal battery only after the external battery is depleted or disconnected. **NOTE:** The battery level indicator on the EasyPulse POC control panel will turn off while the external battery is connected.
- You can check the external battery level at any time by pushing the battery level indicator button. The battery level is indicated by the number of green LED's that are displayed.
 - LED flashing: < 5% charge remaining
 - LED solid: between 5% - 20% charge remaining
 - 2 LEDs solid: between 20% - 40% charge remaining
 - 3 LEDs solid: between 40% - 60% charge remaining
 - 4 LEDs solid: between 60% - 80% charge remaining
 - 5 LEDs solid: between 80% - 100% charge remaining
- The external battery has the same capacity as the EasyPulse POC's internal battery and will offer similar battery runtimes.

RETURNS

Returned products require a Returned Goods Authorization (RGA) number, contact Precision Medical, Inc. All returns must be packaged in sealed containers to prevent damage. Precision Medical, Inc. will not be responsible for goods damaged in transit. Refer to Precision Medical, Inc. Return Policy available on the internet, www.precisionmedical.com.

Manuals available on our website: www.precisionmedical.com

DISPOSAL INSTRUCTIONS

This device may contain electrical components that are hazardous to the environment. DO NOT dispose device into standard trash. Contact your local Waste Management for disposal of Electronic Equipment.



LIMITED WARRANTY AND LIMITATION OF LIABILITY

Precision Medical, Inc. warrants that the External *Lithium Ion Battery*, (the Product), will be free of defects in workmanship and/or material for the following period:

One (1) year from date of shipment

Precision Medical, Inc. is NOT responsible for normal wear and tear, or any neglect or abuse of the product.

Precision Medical, Inc. is NOT responsible for the shipping cost of the repair.

Should any failure to conform to this warranty appear within the applicable period, Precision Medical, Inc. shall, upon written notification thereof and substantiation that the goods have been stored, installed, maintained and operated in accordance with Precision Medical, Inc.'s instructions and standard industry practice, and that no modifications, substitutions, or alterations have been made to the goods, correct such defect by suitable repair or replacement at its own expense.

ORAL STATEMENTS DO NOT CONSTITUTE WARRANTIES.

The representatives of Precision Medical, Inc. or any retailers are not authorized to make oral warranties about the merchandise described in this contract, and any such statements shall not be relied upon and are not part of the contract for sale. Thus, this writing is a final, complete and exclusive statement of the terms of that contract.

THIS WARRANTY IS EXCLUSIVE AND IS IN LIEU OF ANY WARRANTY OF MERCHANTABILITY, FITNESS FOR A PARTICULAR PURPOSE OR OTHER WARRANTY OF QUALITY, WHETHER EXPRESS OR IMPLIED.

Precision Medical, Inc. shall not under any circumstances be liable for special, incidental or consequential damages including but not limited to lost profits, lost sales, or injury to person or property. Correction of non-conformities as provided above shall constitute fulfillment of all liabilities of Precision Medical, Inc. whether based on contract, negligence, strict tort or otherwise. Precision Medical, Inc. reserves the right to discontinue manufacture of any product or change product materials, designs, or specifications without notice.

Precision Medical, Inc. reserves the right to correct clerical or typographical errors without penalty.