

Bariatric Anterior Safety Roller

HCPCS: E1399-1,E1399

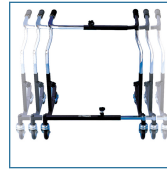


FIGURE A



FIGURE B

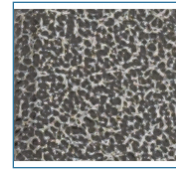


FIGURE C



FIGURE D

- Welded steel frame
- Height adjustable in 1" increments
- Width adjustable (Figure A)
- Adjustable-brake spring tension
- Patient is situated in the center of the Safety Roller, which provides maximum support and improved posture
- Skid-resistant, non-marring, easy-rolling neoprene wheels Ideal for indoor and outdoor use
- Folds easily and stands on its own in the folded position (Figure B)

PRODUCTS	Description
CE 1000 XL	BariatricSRoller,500lb cap,Blk, 1/cs
SPECIFICATIONS	Description
Carton Shipping Weight	24 lbs. 35 lbs.
Handlebar Height	29" - 36"
Warranty	Limited Lifetime
ACCESSORIES	Description
CE 1250	OxygenTank Holder,1/bx, BX
CE 1400	Dial-A-Speed Tab,1pr/bx, BX
CE 1500	Caster Lock Bracket,1pr/pkg, EA
CE 1286	Seat, Anterior Safety Rollers, 1/ea, BX
CE 1270	Extended Uprhts,Roller,1pr/bx, BX
CE 1287	Seat for CE OBESE XL,1/bx, BX
CE 1035 FP	rtl, PR