



## 2990: SURGICAL BLADE REMOVER OPERATION INSTRUCTIONS

PLEASE SAVE THESE INSTRUCTIONS FOR FUTURE USE

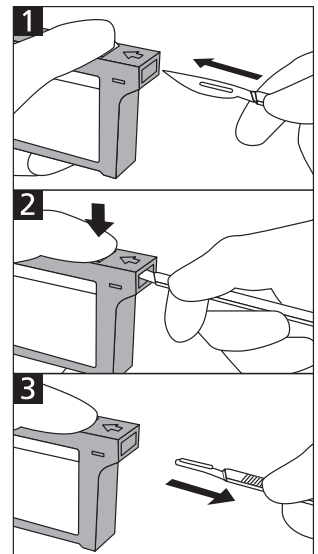
- ⚠ WARNING:** Important! Read and understand these instructions before using the Feather 2990 Surgical Blade Remover. If you do not understand any part of these instructions, contact your medical supply distributor for direction in the use of this product. If the surgical blade remover is not properly operated, personal injury and/or damage to the device could result.
- ⚠ WARNING:** If components are damaged or missing, contact your dealer immediately. **DO NOT** use substitute parts.
- ⚠ WARNING:** GF Health Products, Inc. assumes no responsibility for any damage or injury caused by improper assembly or use of this product.

### SURGICAL BLADE REMOVER OPERATION

- ⚠ WARNING:** The Surgical Blade Remover is designed to eliminate direct contact with surgical blades. Avoid contact with surgical blades at all times.

The Surgical Blade Remover enables safe and easy removal of used disposable blades from any size or type of scalpel handle. It can accept between 150 and 300 used surgical blades, depending on blade size. To remove surgical blades:

1. While lightly pushing the button on top of the Surgical Blade Remover, perform step 2.
2. Hold the surgical blade with right side facing upward as shown at right. Insert the blade into the blade remover slot as far as it will go.
3. Pull the handle out; the detached blade will drop inside the blade remover.



### SURGICAL BLADE REMOVER DISPOSAL

Dispose of the Surgical Blade Remover in accordance with federal and local laws and regulations.



[www.grahamfield.com](http://www.grahamfield.com)

Feather is a registered trademark of Feather Safety Razor Co., LTD.

GF and Graham-Field are registered trademarks of GF Health Products, Inc.

© GF Health Products, Inc. • 2935 Northeast Parkway, Atlanta, GA 30360 • tel 800-347-5678 • fax 800-721-0601