



## Welch Allyn OAE Hearing Screener

The next generation in objective hearing screening technology.



There's a small window of opportunity to realize improved clinical outcomes when detecting and treating hearing loss in young children.

Research has shown that undetected hearing loss leads to delays in speech, language, cognitive and social-emotional development, negatively affecting academic performance and potential.<sup>1</sup>

## The Welch Allyn OAE Hearing Screener

Objective hearing screening technology tests at key speech frequencies (2, 3, 4, 5 kHz), which is ideal when testing newborns, infants, toddlers, preschool and school-age children.

**Low-Cost Disposable Ear Tips:** Fit all sizes of ears, from infant to geriatric. Sizes range from 3 mm to 15 mm.

### Durable Probe:

Designed with HDMI connector to help eliminate connector pin breakage.



**Wireless Printer:** Thermal printer provides graphic and tabular reports in seconds with a single button press.

<sup>1</sup> Moeller MP. Early intervention and language development in children who are deaf and hard of hearing. Pediatrics 2000;106:e43 and Yoshinaga-Itano C. From screening to early identification and intervention: discovering predictors to successful outcomes for children with significant hearing loss. J Deaf Stud Deaf Educ. 2003;8:11-30

<sup>2</sup> Assumes DPOAE screening with 2-4 second averaging

## Objective screening methods support patient comfort and staff efficiencies

- Minimal cooperation required; rapidly screen children who are too young to respond or have difficulty sitting still
- Approved for testing children with pressure equalizer tubes
- Fast—three button pushes turn on the device and complete tests on both ears in 8 – 16 seconds per ear<sup>2</sup>
- Intuitive display prompts staff through the test



## Conducting a test is easier for your staff, even when the environment is not ideal

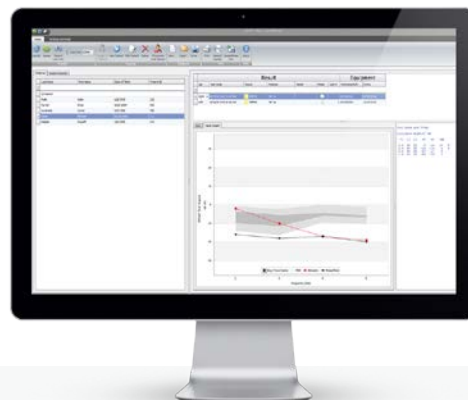
- Patented noise-management technology helps to reduce poor test results due to ambient sound
- AutoStart check and in-the-ear calibration helps to improve test accuracy and outcomes, ensuring that probe is secured and testing is started in acceptable conditions

Adaptive Noise  
Artifact Reduction



## Easy access to patient data to share results, consult and support long-term hearing screening protocols

- Store up to 250 tests on device, even when battery life is depleted
- Transfer test data from OAE Hearing Screener to Welch Allyn Data Manager Software in seconds, via hard-wired or wireless connectivity from device to PC



## Welch Allyn Data Manager Software

An intuitive and powerful application to manage, view, archive and export test results

- Results can be sorted by ear, testers, dates and outcomes
- Export full-color, 8.5" x 11" reports in multiple formats with graphic and tabular data, results notes and test information—perfect for consulting with parents and colleagues and for record keeping
- Easily attach test results to patient records within most EMR systems



## Ordering Information

- 39500** OAE Hearing Screener Complete System (includes printer, disposable ear tip starter kit and charging cradle)
- 39500-NP** OAE Hearing Screener Complete System (printer not included)
- 39402** OAE Hearing Screener Probe Assembly
- 39410** Printer, complete (includes power supply)
- 39420** OAE Disposable Ear Tip Starter Kit
- 39411** OAE Hearing Screener Data Manager Software
- 39415** OAE Hearing Screener Carrying Case

For a full list of products available for sale, visit [www.welchallyn.com](http://www.welchallyn.com)



## Protect your investment

**Welch Allyn OAE Hearing Screener standard warranty covers device parts and labor, and accessory protection on defective probe only; one-year term. No calibration plans available.**

Go beyond the standard product warranty with Welch Allyn Partners in Care<sup>SM</sup> Services Comprehensive Program Coverage (one- and two-year) includes:

**S1-39400** Comprehensive Partnership Program (one-year)

**S1-39400-2** Comprehensive Partnership Program (two-year)

- Remote Technical Support
- Clinical Training Discounts
- Device Parts and Labor
- Loaner Coverage
- Priority Service—faster turn-around time
- Priority/Free Shipping
- Accessory Protection: Probe—defective or broken probe (one per device, per year)



Partners in Care<sup>SM</sup> Services

SUPPORT | EDUCATION | PROFESSIONAL

## Reimbursement Information

**Procedures performed with the OAE device may be eligible for reimbursement using CPT<sup>®</sup> codes:**

**92558:** Evoked otoacoustic emissions, screening (qualitative measurement of distortion product or transient evoked otoacoustic emissions), automated analysis

**92587:** Distortion product evoked otoacoustic emissions, limited evaluation (to confirm presence or absence of hearing disorder, 3-6 frequencies) or transient evoked otoacoustic emissions, with interpretation and report

Reimbursement information is provided for convenience only and represents no statement, promise, or guarantee by Welch Allyn concerning coverage or levels of reimbursement. It is always the provider's responsibility to determine coding, coverage and claim information for the services provided. Reimbursement practices and policies vary by payer and geographic locality and change regularly. Confirm the requirements and specific coding, coverage, medical necessity, and reimbursement guidelines of the applicable payer before submitting claims by reviewing your managed care contracts, consulting the Physicians' Current Procedural Terminology, The Federal Register, or contacting provider services.

<sup>†</sup>CPT copyright 2013 American Medical Association. All rights reserved. CPT is a registered trademark of the American Medical Association. Applicable FARS/ DFARS restrictions apply to government use. Fee schedules, relative value units, conversion factors and/or related components are not assigned by the AMA, are not part of CPT, and the AMA is not recommending their use. The AMA does not directly or indirectly practice medicine or dispense medical services. The AMA assumes no liability for data contained or not contained herein.

For more information on the Welch Allyn OAE Hearing Screener, please contact your local distributor or Welch Allyn at 1.800.535.6663.

Welch Allyn, Inc.  
4341 State Street Road  
Skaneateles Falls, NY 13153 USA  
(p) 800.535.6663 (f) 315.685.3361

[WWW.WELCHALLYN.COM](http://WWW.WELCHALLYN.COM)

**WelchAllyn<sup>®</sup>**